

# **CONVERSION KIT SR810**

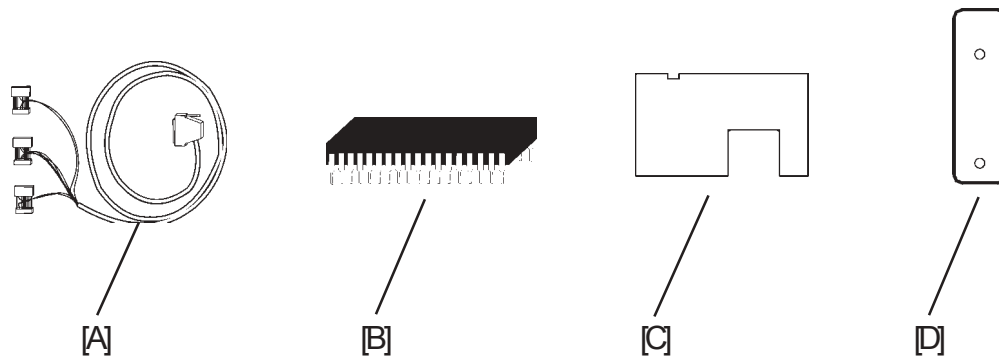
## **INSTALLATION MANUAL**

April 22nd, 2003  
Subject to change

Page intentionally blank

# 1 BOOKLET MAKER INSTALLATION

## 1.1 ACCESSORY CHECK



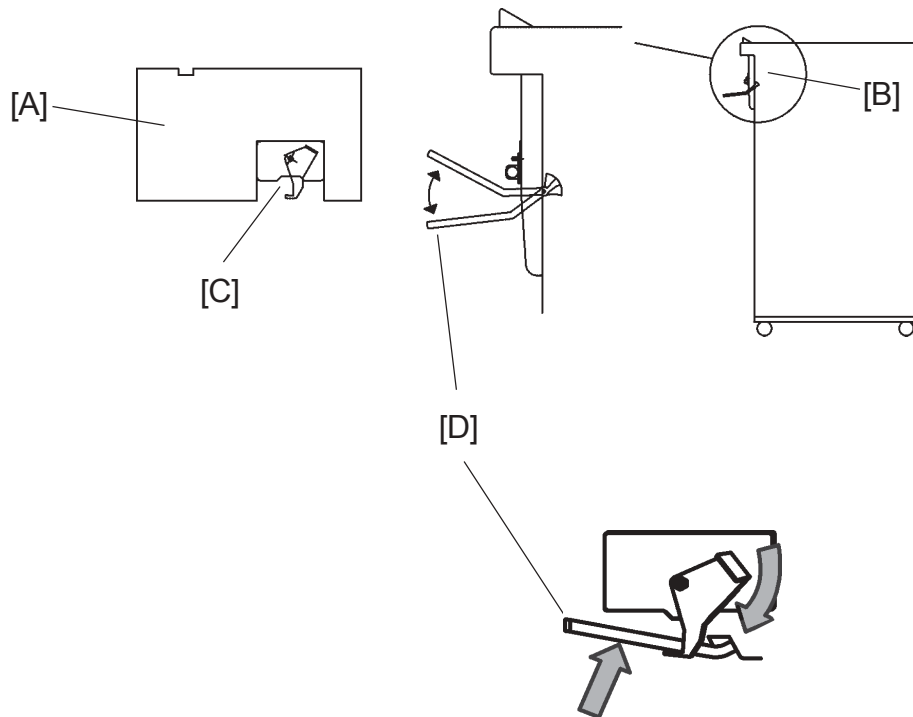
Check the quantity and condition of the accessories in the box against the following list:

Description

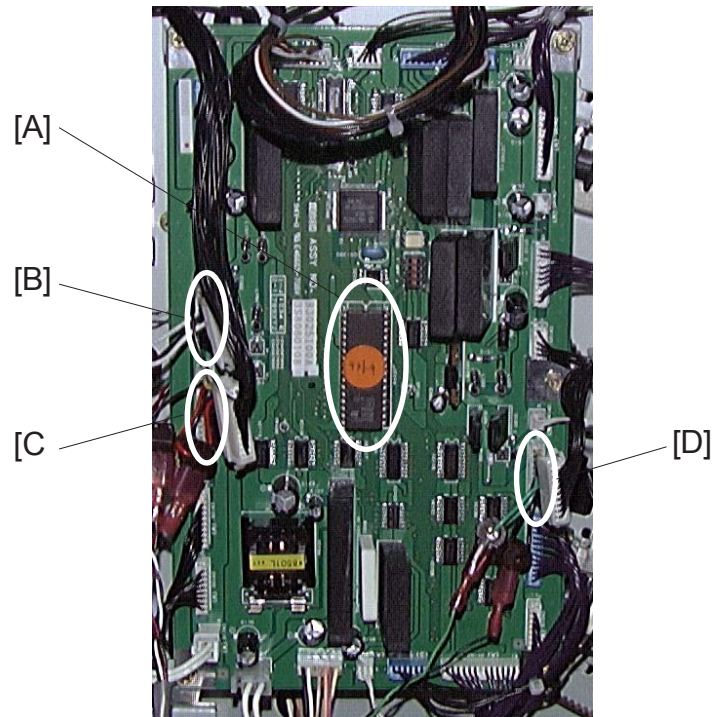
- A. Communication Cable for finisher SR810
- B. EEPROM for finisher SR810
- C. Template
- D. Plastic guide for shift tray plate


## 1.2 INSTALLATION PROCEDURE

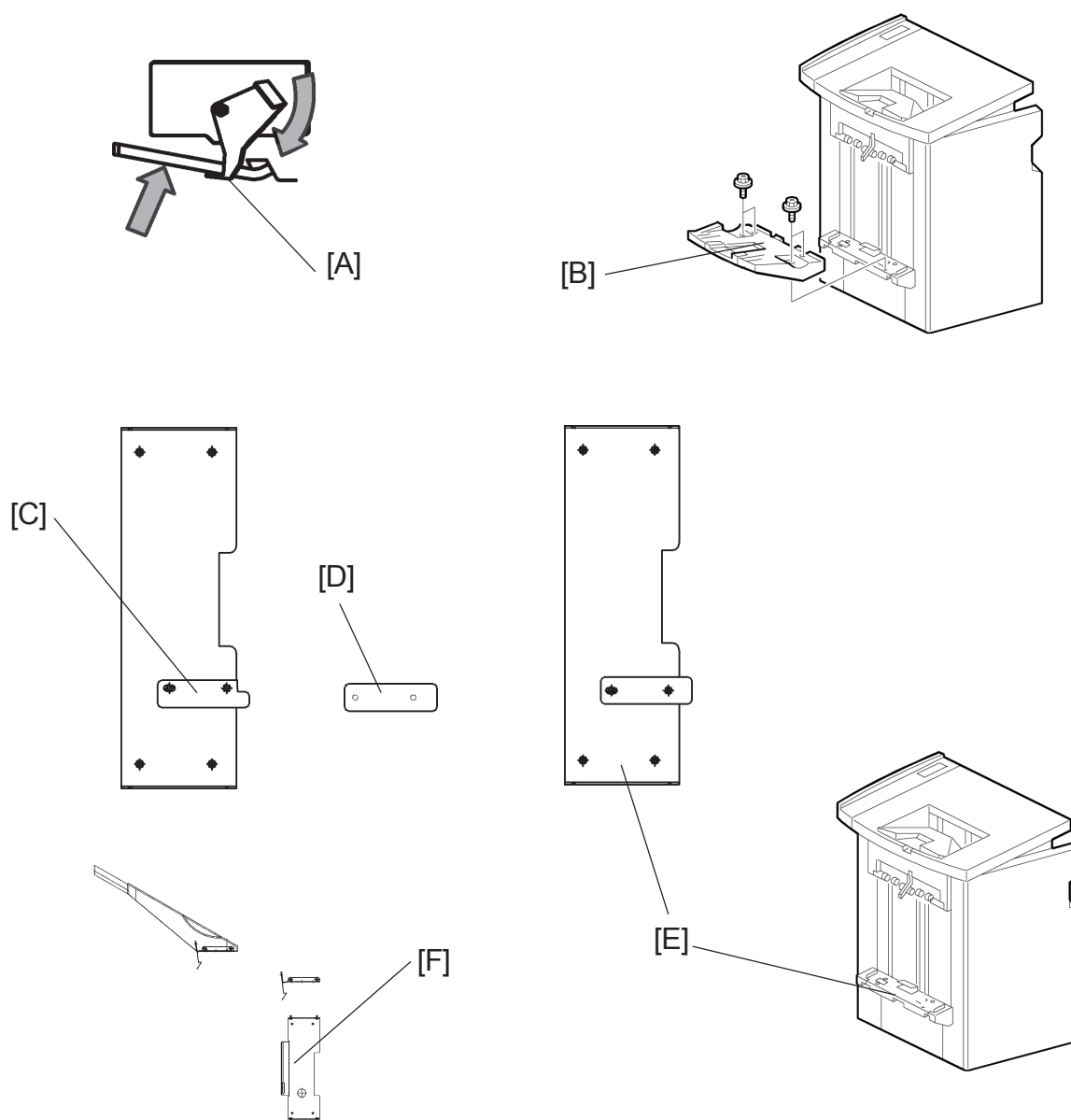
### *Preparing the finisher*



1. Take the template [A] and hold it to the output on the finisher [B].
2. Remove the adhesive backing from the Exit arm catcher.
3. Install the exit arm catcher on the finisher, where the cutout [C] on the template is.
4. Lift up the exit paper arm [D], and set onto the exit arm catcher.

*Interface*

1. Remove the finisher rear cover (  x2).
2. Change the EEPROM [A] on the main board PCB1 in the finisher.
3. Remove the Copier finisher connectors CN115 [B], CN120 [C] and CN125 [D] from the Main board PCB1.
4. Take the Communication cable from the Conversion kit. Install connectors CN115, CN120 and CN125 on the Main board.  
NOTE: Make sure you connect the connecotrs correctly, the yellow wire should always be on top
5. Connect the Copier finisher connecotrs CN115 [B], CN120 [C] and CN125 [D] to the Communication cable from the Conversion kit.
6. Secure the Communication cable in the finisher, with tie raps from the Conversion kit.

*Shift tray plate guide*

1. Make sure that the Exit paper arm is in the upper position [A].
2. Turn ON the Copier, the shift tray will go down to the lower position.  
NOTE: Make sure that the finisher connector is connected to the copier.
3. Turn OFF the copier.
4. Remove the finisher exit tray [B] (⚙ x4).
5. Remove the plastic deflector, underneath the finisher exit tray.
6. Remove the Plastic guide [C] from the Shift tray plate (⚙ x2).
7. Install the Plastic guide [D] from the Conversion kit on the Shift tray plate (⚙ x2).
6. Install the Shift tray plate [E] on to the finisher (⚙ x4 counter screws from installation kit)
7. Install the Exit tray plate [F] on to the finisher exit tray (⚙ x4 from installation kit).

*Preparing the SR90 Interface*

After installing the SR90, it is important to set the SR90 to the correct Copier Interface.

1. Turn ON the SR90.
2. Enter the Service mode:
  - Press the Tools button.
  - With the Arrow key, select Service access and press the OK button.
  - Key in password: **107** (using the Arrow and Change button).
  - Press the OK button
3. With the Arrow key, select Interface and press the OK button.
4. Select Bellini-1/Mojito, press the OK button.
5. Turn OFF the SR90.

### *Adjustments*

The design of the new SR840 finisher is different than the design on the SR810 finisher. Therefore can not the Multi tool be used when adjusting the side to side adjustment on the Booklet maker.

1. Follow the installation manual for the SR90 until ( (👉 1.3.3 step 3 ).
2. After the Gap adjustment between the finisher and booklet maker is performed, continue here.
3. Adjust the distance between the front of the Booklet maker in feeder and the front of the finisher panel [A].
4. The distance should be 5 - 7 mm.  
NOTE: Adjust by moving the two positioning pins with the Multi tool.
5. Continue in the installation manual for the SR90 ( (👉 1.3.3 step 4 ).

